

# Sheryl Crow's living room showcases a luxury twist on the sweet Southern country aesthetic



BY MEGAN SLACK  
PUBLISHED 13 DAYS AGO

Mastering a warming country aesthetic in our homes is one thing, but how can we make this traditional style feel that little bit more luxurious? According to designers, Sheryl Crow has the solution.

The singer, who resides in none other than the country music capital, Nashville, shared a glimpse inside her white living room – and it's a trove of sweet Southern-style design inspiration – complete with rustic antiques and shiplap walls. It is her color palette, paired with her curated art selection, however, that has got designers the most excited.

Sheryl's soft white walls are the first step to timeless luxury, experts explain, but the singer has only accentuated the sophisticated look further by decorating with art and adding a statement tufted back sofa – another nod to historic luxury. Here's why the look is so impactful.

'White is probably the most timeless, versatile, and classic color that you can use in interior design. An all-white living room is a great choice for those who want to create an airy, bright, and modern atmosphere in their home,' says All Barndominium Plans's lead designer, Louie Lavec. 'It's the perfect blank canvas to express your creativity and style.'

Sheryl's space combines elements of both traditional and luxurious design aesthetics, achieved by pairing this timeless hue with sophisticated art and furniture pieces. So how can we recreate the same look with our chosen artworks?

'Even if you have a large and varied collection, decorating and planning an artwork scheme in a home can feel like a daunting task. My advice is to pick the key and most special three or four pieces and hang these in the most prominent places [much like Sheryl has done],' says designer Naomi Astley Clarke.

To ensure her space appears timeless, traditional, and simultaneously luxurious, Sheryl has chosen nineteenth-century style pieces with a European flair. However, as Naomi explains, it is possible to recreate a similar look with more contemporary artworks, too. What matters is pairing the pieces with the right colored backdrop, just as Sheryl has done.



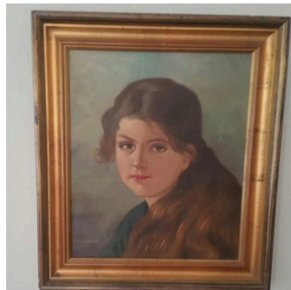
(Image credit: Max Rollitt)

'We are often drawn to our favorite colors within art, so I always ask clients to show me their artworks,' Naomi says. 'It is such a personal choice, and I find it insightful to see what people choose to hang on their walls – from there, I can usually understand pretty quickly what color palette to work from and the 'feel' of a home a person is wishing to curate.'

We're buying our way into Sheryl's beautifully-curated space with these inspired picks below.



Antique Walnut Table  
\$15,900 at 1stDibs



Hansel and Gretel Paintings  
\$275 at Etsy



Tufted-Back Sofa  
\$20,500 at 1stDibs